

Transponder Card 25G OTU/OEO FW625G

The 25G OTU/OEO Transponder Card is a module developed by FIBERWDM for amplifying signals in optical transmission. It can amplify business protocols with arbitrary rates ranging from 1.25Gbit/s to 25.78Gbit/s. This board is suitable for optical communication systems such as SDH/POS/SONET/SAN/ETHERNET, providing a high-quality solution for transmission lines with significant fiber loss.

Product Introduction

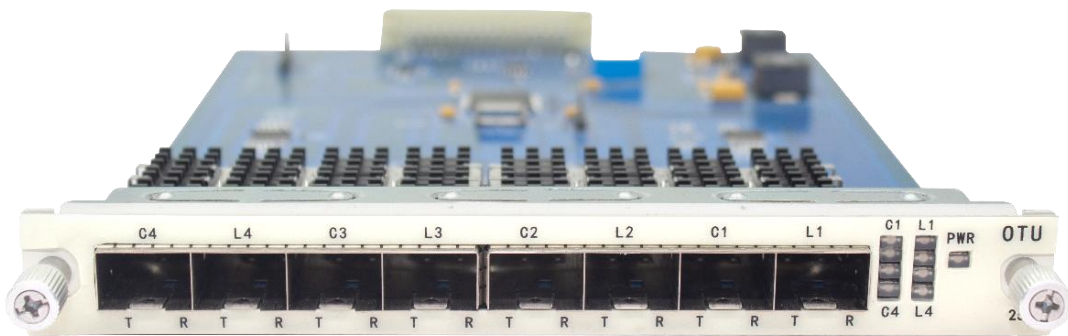


Figure 1: 25G OTU/OEO Module

Product Features

- ◆ Supports applications such as single-mode to multi-mode conversion and optical power amplification.
- ◆ Supports unidirectional or bidirectional relay amplification.
- ◆ Supports amplification at various wavelengths, including 850nm, 1310nm, CWDM or DWDM.
- ◆ Supports the access of 4-channel bidirectional or 8-channel unidirectional business protocols with arbitrary rates ranging from 1.25Gbit/s to 25.78Gbit/s.
- ◆ Transparent transmission of business data.
- ◆ Hot-swappable capability.
- ◆ Supports FEC functionality, optimizing output, monitoring DDM signals, and

enabling link detection (no light emission when no receiving signal is present).

- ◆ Supports SNMP-based unified network management platform with management options including CLI (telnet and console), Web, and NetView (graphical interface).

Product Specifications

Parameters		Technical Specifications
Maximum Capacity		4x25G bidirectional transmission 8x25G unidirectional transmission
Wavelength Range		CWDM: 1271~1611nm Multimode: 850nm Single mode: 1310nm DWDM: C-Band (100GHZ or 50GHZ)
Business Access Types		SDH、SONET、Ethernet、SAN、OTN、Video
Management Functions		CDR Function (Real-time DDM Monitoring) Adaptive Setting for Different Rates Unidirectional or Bidirectional Business Setting
Management Methods		Web、NetView
Dimensions		156 (W) × 20 (H) × 225 (D) (mm)
Environmental Requirements	Operating Temperature	-10°C ~ 50°C
	Storage Temperature	-40°C ~ 80°C
	Relative Humidity	5% ~ 95% (non-condensing)
Safety and EMC Compliance		Complies with FCC, UL, CE, TUV, CSA standards
Power Consumption		<20W

Ordering Information

Part No.	Specifications
FW625G	25G Transponder Card 4*25Gbit/s Transponder(OEO) Card,Support 1.25~25.78G, 8*SFP28, used in FW6600 series take one slot